



# TOHRO

— 灯籠 —

The Japanese Traditional

Made in  
JAPAN

# TOHRO — 灯籠 —

We will deliver the beauty and the spirit of craftsmanship of Japanese culture through stone lanterns called Tohro in Japanese.





Historically, stone lanterns were placed in sanctuaries. They help create an elegant space with a Japanese essence.

Stone lanterns have a long history in Japan, dating back to the Nara period about 1300 years ago, where they have been placed in Japanese gardens, at Shinto shrines, and Buddhist temples. In shrines, the stone lanterns served, not just as a source of light, but also as a means to seek greater divine protection and to ward off evil spirits. Since the Azuchi-Momoyama period, with the development of the tea ceremony, a sense of elegance and refinement began to be sought in Japanese gardens. This led to an increase in various sophisticated designs, laying the foundation for today's Japanese stone craftsmanship culture.

## The joy of nurturing stones in your garden.

A single craftsman takes his time and carefully handcrafts stone lanterns. The stone texture finished with the craftsman's chisel is soft and has a warm feeling, and with each passing year, it gains more character. When a stone lantern is placed, it becomes accustomed to their surrounding nature over time. The changing stone color, the stains, and the moss that accumulate on the surface are cherished, reflecting a sense of beauty of Japan.





Craftsmen spare no effort in carving the stone,  
enriching the hearts of those who view their works.

---

Made in  JAPAN

---

## Artisanal skills create unwavering quality.

Stone lanterns are a piece of stone work that requires a high level of craftsmanship. Craftsmen continuously hone their skills, so even without custom orders, they keep making display pieces. In doing so, they cultivate an eye for stones, pass on knowledge, skills, and traditions, and maintain the highest quality. Craftsmen create handmade stone lanterns with the hope that “they enrich the hearts of those who see them.” Their works are detailed, meticulous, and filled with warmth.

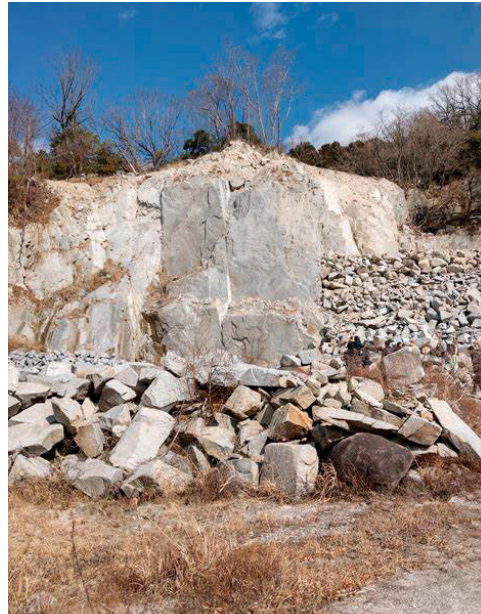




Okazaki Castle, where Tokugawa Ieyasu was born.



Statue of Tokugawa Ieyasu



Stone quarry in Okazaki City

## The locations of Japan's renowned stone brands.

Sugita Sekizaiten Co., Ltd. is a long-established company that has been making stone lanterns for over 190 years, originating from Okazaki city, Japan.

Stone crafts from Okazaki city are hailed as one of the three major stone producing areas in Japan, alongside Ibaraki prefecture and Kagawa prefecture. Stone lanterns, stone pagodas, and water basins are designated as traditional crafts by the Ministry of Economy, Trade and Industry. Tokugawa Ieyasu, who founded the Edo shogunate, was born in Okazaki Castle. It is said that the beginning of the stone industry in this area started when skilled stonemasons were relocated there for the construction of the castle. Okazaki was known for its abundance of high-quality granite, and the stone industry in the area developed due to contributions of stone lanterns from this region to shrines and temples associated with Tokugawa Ieyasu. Sugita Sekizaiten Co., Ltd. is one of the oldest companies in the area.

The stone from Okazaki, the birthplace of the renowned shogun "Tokugawa Ieyasu," has been cherished and known as the "Promotion Stone" in honor of Lord Ieyasu.



**Tokugawa Ieyasu**  
January 31, 1543 - June 1, 1616

# The differences between Japanese products and overseas manufactured products.

## Made in Japan products.



### Handcrafting

A single craftsman is responsible for making one stone lantern, taking the time to meticulously craft every detail. Due to the careful and time-consuming process, mass production is not possible.

※We also offer products that are not finished with chisels.



#### 1 Round shaped stone at the top of stone lanterns.

It has a soft textured shape.



#### 2 Kasa / Upper part of a stone lantern that is shaped like an umbrella.

It is characterized by smooth and gentle curves, and rounded edges.



#### 3 Hibukuro / Lamp housing

This part is made to place a candle.



#### 4 Joint part

It is handcrafted and adjusted to ensure stability.



#### 5 Kobu / A hump made at the bottom of pole to sustain stone lanterns in the soil.

The part that is buried in the soil is made thicker than the pole for stability.



## Stone lanterns manufactured overseas.



### Machining

In order to reduce the cost and make products efficiently, each part is manufactured by a different worker.



#### 1 Round shaped stone at the top of stone lanterns.

It is processed by using machinery, as a result, the shape becomes sharp compared to handmade products.



#### 2 Kasa / Upper part of a stone lantern that is shaped like an umbrella.

The surface bears marks of machining, and the edges are sharp. As a result, it lacks the soft texture like handmade products.



#### 3 Hibukuro / Lamp housing

There are remains of machining.



#### 4 Joint part

There may be a gap in jointed part, as a result, adjustment is necessary by putting a small block of metal, etc.



#### 5 Kobu / A hump made at the bottom of pole to sustain stone lanterns.

There is not such a hump, as a result, stability may be less than handmade products.

# Product lineup

• These product photos are for reference only.  
Please refer to the product list for more information.  
• All of our items are one-of-a-kind.

## Tohro / Stone Lantern

## Tou / Tower

## Mizbachi - Tukubai / Water Basin

### Tachi Tohro



TCH01



TCH02



TCH03

### Ikekomi Tohro



IKE01



IKE02



IKE03

### Oki Tohro



OKI01



OKI02



OKI03

### Yukimi Tohro



YKI01



YKI02



YKI03



TW03



TW02



TW01



WB01



WB02



WB03



WB04



WB05



WB06



WB07



WB08



Case : 01

# Tachi Tohro

It is a type of stone lantern with a base at the bottom, designed to be stood up for use.

A standing stone lantern in the forest, with moss beginning to form on its surface, blending into the greenery around it.



All of our items are one-of-a-kind.

Case : 02

## Oki Tohro

It is a small-sized stone lantern designed to be placed in Japanese garden.

A quaint little stone lantern placed by the edge of a pond, featuring charming rounded contours that make it endearing. Though petite, it draws the eye with its distinctive design.



All of our items are one-of-a-kind.

Case : 03

# Tachi Tohro

It is a type of stone lantern with a base at the bottom, designed to be stood up for use.

Utensils associated with the tea ceremony are intricately carved in three dimensions on the surface of this stone lantern. The heart-shaped pattern carries the implication of warding off evil, and is also used in shrine and temple architecture.



All of our items are one-of-a-kind.

Case : 04

# Mizubachi

---

Water basin

It is a water basin with a beautifully rounded shape. The curves and organic texture are achieved by the craftsmanship of a hand finishing with chisel.

The water basin, whose surface has turned black with age, takes on a more substantial appearance, resembling India ink paintings.



All of our items are one-of-a-kind.

Case : 05

## Tachi Tohro / Tsukubai

It is a type of stone lantern with a base at the bottom, designed to be stood up for use.

Tsukubai is a traditional Japanese water basin made of stone and one of the facilities for Japanese traditional gardens and installed in an entry garden to a teahouse.

This item is placed at the entrance of a Japanese restaurant, designed to welcome guests. At the entrance, there's a stone lantern engraved with the name of the restaurant, accompanied by a tsukubai (a traditional Japanese water basin).

Despite the limited space, one can feel the spirit of Japanese hospitality and a high sense of aesthetics.



All of our items are one-of-a-kind.

Case : 06

# Tachi Tohro

It is a type of stone lantern with a base at the bottom, designed to be stood up for use.

While stone lanterns with deer carvings are common, this unique stone lantern also incorporates carvings of a Japanese bush warbler (uguisu), making it a rare find. Additionally, it features auspicious motifs that symbolize eternity and carry meanings of good fortune.



All of our items are one-of-a-kind.

Case : 07

## Ikekomi Tohro

It is a garden lantern designed to be installed without a base by embedding the pole directly into the ground.

This is a stone lantern with a rustic, weathered texture. The lantern was named for its resemblance to fireflies dancing in the air, as the light flickers and reflects on the surface of a pond, creating an enchanting illusion.



All of our items are one-of-a-kind.



We are welcome to receive custom orders, allowing you to create a unique product in consultation with our artisans. Please feel free to discuss your ideas with us.

Many of our items are one-of-a-kind. After understanding your preferences, we can also send photos of products not listed in our catalog. Please note that if an item has already been sold, we kindly ask for your understanding.

**ESPERAND**

**ESPERAND Co., Ltd.**

Shimoda Building 2-8-21 Kandaogawamachi,  
Chiyoda-ku, Tokyo-to 101-0052  
Japan

TEL : +81-3-5577-7630

FAX : +81-3-5577-7631

e-mail : [info@espe-rand.co.jp](mailto:info@espe-rand.co.jp)

<http://www.espe-rand.co.jp>